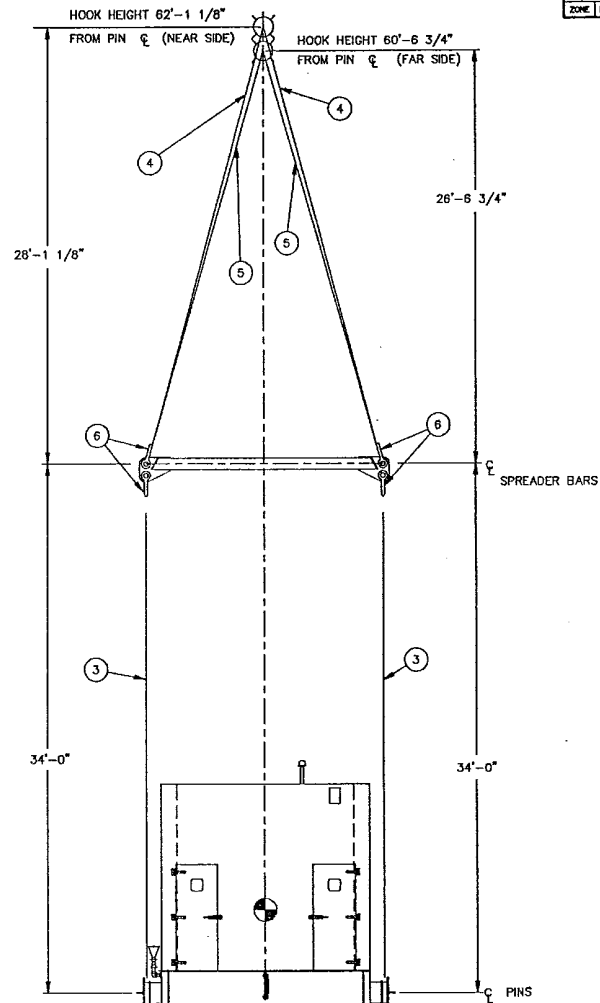


SINGLE HOOK ARRANGEMENT

LIFT END VIEW WITHOUT GENERATOR  
(VIEWED FROM GENERATOR END)



DUAL HOOK ARRANGEMENT

A/C 0127

ACAD		UNLESS OTHERWISE SPECIFIED DIMENSIONS ARE IN INCHES		CONTRACT NO.		TITLE	
HEIGHTS	STRESSES	DIAGONALS X & Y DO NOT SCALE DRAWING	TOLERANCES ANGULAR &	DRAWN S AVARY	DATE 3/90	LIFT PLAN LM2500 G.T.G.	
MATERIALS & PROCESS	MANUFACTURING ERROR	TREATMENT	FINISH	CHECK F QUINN	3/90	DESIGN K JONES	
QUALITY ASSURANCE V ASHLEY	3/90	260134	USED ON	DESIGN ACTIVITY H ROSS	3/90	CUSTOMER	
ADDITIONAL APPROVALS	DATE	PART NO.	NEXT FINAL	QTY REQ FOR ASSY	APPLICATION	SCALE 1/48	RELEASE DATE
						280298	
						2 OF 6	

Technical drawing of a spreader bar assembly. The drawing shows a side view of the assembly with various dimensions and labels. Key dimensions include:

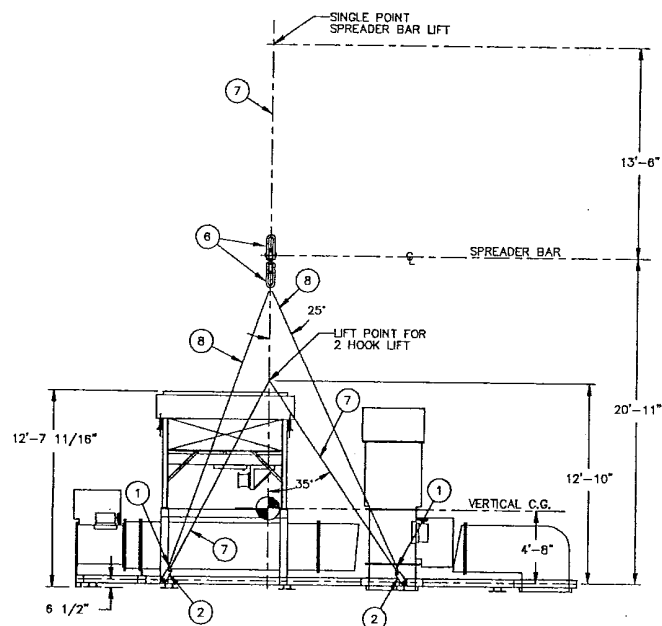
- Overall length: 68'-0"
- Overall width: 15'-5"
- Distance from end to first spreader bar: 21'-3"
- Distance between first and second spreader bars: 16'-6 1/2"
- Distance between second and third spreader bars: 38'-0 1/8"
- Distance between third and fourth spreader bars: 21'-5 5/8"
- Distance from fourth spreader bar to end: 8'-8 7/8"
- Distance from end to first spreader bar (including hook): 21'-6"
- Distance between first and second spreader bars (including hook): 14'-8"
- Distance between second and third spreader bars (including hook): 38'-0"
- Distance between third and fourth spreader bars (including hook): 21'-5"
- Distance from fourth spreader bar to end (including hook): 8'-8"

Labels and components include:

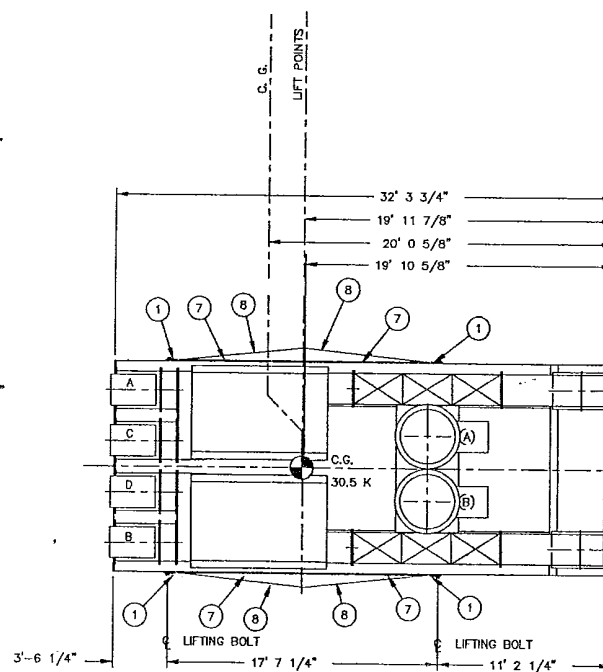
- END OF ROOF
- SPREADER BAR FOR ONE HOOK LIFT
- LIFT PINS, HOOK & SPREADER BAR FOR TWO HOOK LIFT
- SKID
- 50.8 x
- 52.9 x
- 41.8 x
- 40.2 x
- 40.1 x
- 11.1 x (C)
- 14.8 x (C)
- 173 x
- 54'-0"
- 68'-0"
- 21'-6"
- 14'-8"
- 38'-0"
- 21'-5"
- 8'-8"

A/C 0127

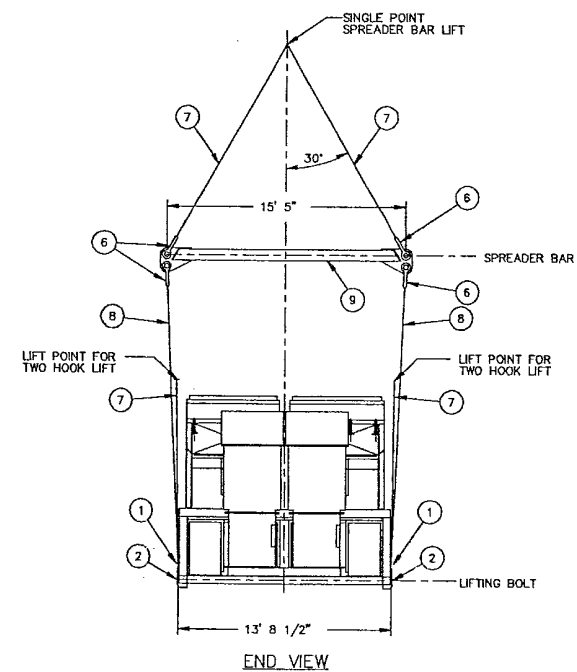
A/C 0127										FROM NO.		PART OR IDENTIFYING NO.		NOMENCLATURE OR DESCRIPTION		MATERIAL SPECIFICATION		ITEM NO.	
QTY REQD										PARTS LIST									
ACAD										CONTRACT NO.									
WEIGHTS										UNLESS OTHERWISE SPECIFIED DIMENSIONS ARE IN INCHES									
STEPS										DECIMALS      FRACTIONS 1/16 ± .03      1/32 ± .015 3/64 ± .010      DO NOT SCALE DRAWING									
MATERIALS & PROCS										TREATMENT									
MANUFACTURING ENGR										FINISH									
QUALITY ASSURANCE V ASHLEY										3/90									
ADDITIONAL APPROVALS										DATE      PART NO.      NEXT      FINAL      NEXT ASSY      USED ON									
DATE										SIMILAR TO      ACT WGT      CALD WGT									
QTY REQD PER ASSY										APPLICATION									
SCALE 1/48										RELEASE DATE									
SHEET 3 OF 6										LIFT PLAN LM2500 G.T.G. 280298									



ELEVATION  
TILT • LOW HOOK 0.45°



PLAN



END VIEW

ROOF SKID LIFT

A/C 0127

ACAD								UNLESS OTHERWISE SPECIFIED DIMENSIONS ARE IN INCHES				CONTRACT NO.				PARTS LIST			
NOTES										TOLERANCES				DRAWN	DATE	TITLE  LIFT PLAN LM2500 G.T.G.			
STRESS										DECIMALS .001 & .002 .003 & .010 DO NOT SCALE DRAWING				ANGLE ±	3/90				
MATERIALS & PROCESS										TREATMENT				CHECK	3/90				
MANUFACTURING ENG'G										FRESH				DESIGN	3/90				
QUALITY ASSURANCE														DESIGN ACTIVITY	3/90	SIZE FROM NO. ENG. NO.  D 1/46 RELEASE DATE SHEET 4 OF 6			
W. ASHLEY	3/90	PART	NEXT	FINAL	NEXT ASSY	USED ON	260134	SIMILAR TO				ACT WT	CALC. WT	CUSTOMER					
ADDITIONAL APPROVALS	DATE	QTY	REQD	PART ASSY	APPLICATION														



1		91024	SPREADER BAR	GENERATOR SPREADER BAR	13
2		-12	SLING	1 3/4" DIA. X 10'-0" B/B STD EYE BOTH ENDS (6" X 37" 1VRC)	12
4		-11	SHACKLE	CROSBY G-2130 35 TON S.V.L. (CROSBY DR APPROVED)	11
		91005	LIFTING PIN	UNIT LIFT PIN	10
2		93867	SPREADER BAR	UNIT LIFT SPREADER BAR	9
		-8	SLING	1" DIA X 20'- 1" B/B, STD EYE BOTH ENDS (6 X49 1VRC E.1P/S)	8
4		-7	SLING	1" DIA X 14'- 7" B/B, STD EYE BOTH ENDS (6 X49 1VRC E.1P/S)	7
2		-6	SHACKLE	CROSBY G-2130 55 TON S.V.L. (CROSBY DR APPROVED)	6
		-5	SLING	2 1/2" DIA X 27'- 8" B/B, STD EYE BOTH ENDS (6 X49 1VRC E.1P/S)	5
2		-4	SLING	2 1/2" DIA X 26'- 7" B/B, STD EYE BOTH ENDS (6 X49 1VRC E.1P/S)	4
4		-3	SLING	2 1/2" DIA X 32'- 10" B/B, STD EYE BOTH ENDS (6 X49 1VRC E.1P/S)	3
4		-2	PLATE	1" X 4"X 12" A36	2
4		-1	SHACKLE	CROSBY G-2130 6 1/2 TON S.V.L. (CROSBY DR APPROVED)	1
QTY REQD	FROM NO.	PART OR IDENTIFYING NO.	NOMENCLATURE OR DESCRIPTION	MATERIAL/SPECIFICATION	ITEM NO.

<b>ACAD</b>													UNLESS OTHERWISE SPECIFIED DIMENSIONS ARE IN INCHES				CONTRACT NO.				PARTS LIST																
MODIFTS												TOLERANCES				DRAWN		DATE		<b>BILL OF MATERIALS ALL UP LIFT</b>																	
STRESS												DECIMALS      ANGULAR				CHECK		3/90																			
MATERIALS & PROCESS												X.X   .01 XXX & .010 DO NOT SCALE DRAWING				F QUINN		3/90																			
MANUFACTURING ENGRG												TREATMENT				DESIGN		3/90																			
QUALITY ASSURANCE <b>V ASHLEY</b>						3/90						260134				FINISH				DESIGN ACTIVITY H ROSS		3/90		SIZE		FROM NO.		DWG NO. <b>280298</b>									
ADDITIONAL APPROVALS						DATE		PART CHG NO.		NEXT FINAL		NEXT ASSY		USED ON		SIMILAR TO		ACT WT		CALD WT		CUSTOMER		D		SCALE		NONE		RELEASE DATE		SHEET		6 OF 6			